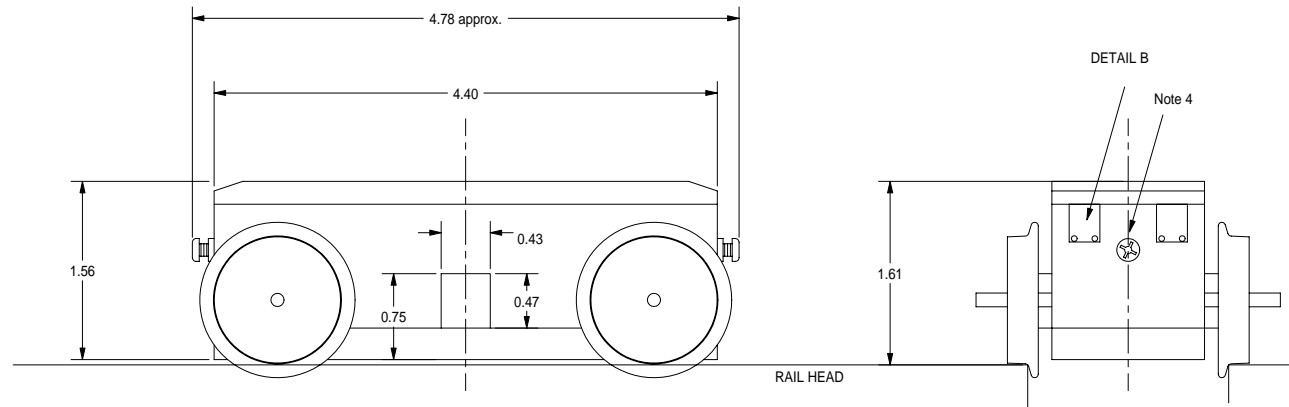
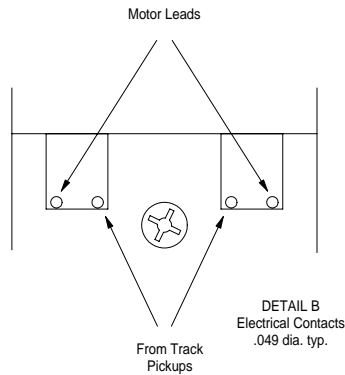
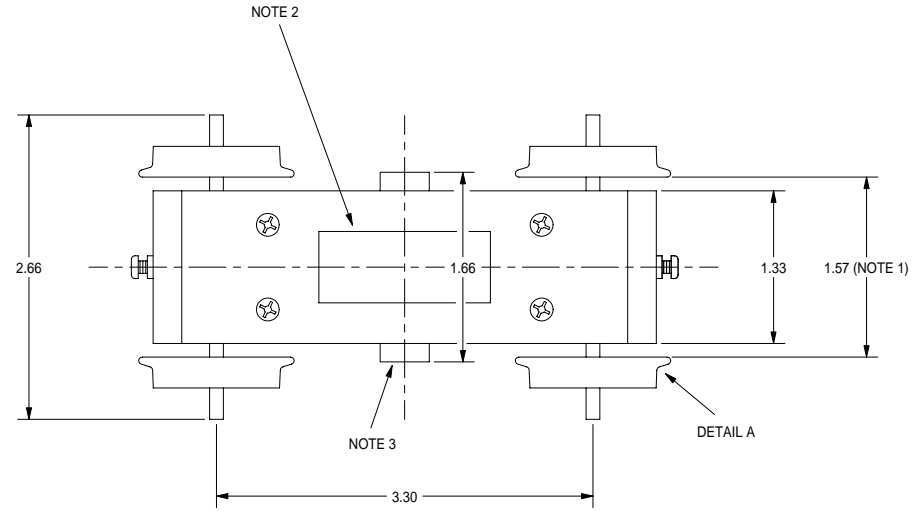
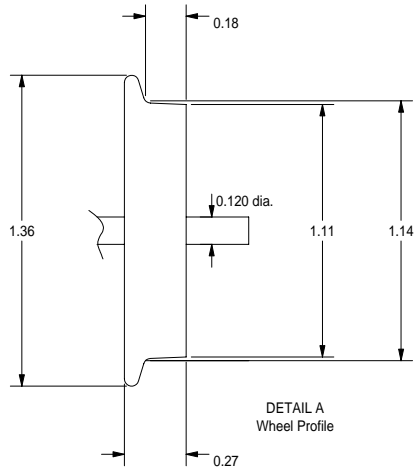


NOTES:

1. Drawn at 1.575. My samples measured 1.561-1.563
2. Clearance opening for motor can
3. Track skate housing
4. End play/gear lash adjustment
5. USA Trains P/N R22-12 replacement motor truck (NW-2)
6. If used with USA Trains P/Ns R22-14 and R22-15:  
 Bolster height is ~1.85 unloaded  
 Kingpin diameter is 0.315



NO: <b>BC1</b>	<b>POWER BRICK, USA P/N R22-12</b>		<b>D. C. &amp; M. R. R. Co.</b>	
REV: <b>-</b>			Engineering Dept. Delores, Mont.	
Copyright 2005 Steven C. Seitel	Dimensions in inches unless noted		By: <b>D. Nabbit</b>	Date: <b>January 5, 2005</b>
	.XX +/- .01	.XXX +/- .002	.XXXX +/- .001	